

NORTH AMERICA

UNITED STATES

**ONE MICHAEL OWENS WAY
PERRYSBURG, OHIO 43551**

PRODUCT DEVELOPMENT

THIS BOTTLE, AS DESIGNED, DOES NOT PROVIDE STANDARD CROWN REST PLATFORM CLEARANCE. CUSTOMER MUST CONTACT THE EQUIPMENT SUPPLIER TO CONFIRM THAT SUITABLE CLEARANCE IS AVAILABLE.

① FILL POINT(S) - APPROXIMATE FILL LOCATION MAY VARY UP OR DOWN FROM THAT INDICATED.

C.I.D. DOT CODE AND CAVITY NUMBER TO APPEAR ON
HEEL. CAVITY NUMBER TO BE 3.18 [.125] TALL.

C.I.D. DOT CODE IS LOCATED AT MINIMUM HEIGHT PER GS-217.

HEEL LETTERING TO APPEAR ON SIDE OPPOSITE C.I.D.
DOT CODE, AND TO BE 3.18 [.125] TALL.

OPTIONAL:
BOTTOM PLATE LETTERING TO BE 4.76 [.188] TALL,
WITH BAR BELOW LETTERING.

OPTIONAL:
C.I.D. RINGS OR DOT CODE TO APPEAR ON BOTTOM.

CRESCENT KNURLING TO APPEAR ON BEARING SURFACE.

THIS ITEM MAY UTILIZE BLANK AND FINISH EQUIPMENT
FROM GB-15944.

THIS CONTAINER IS DESIGNED FOR PRODUCTS UP TO AND INCLUDING 4 GAS VOLUMES WITH NO PASTEURIZATION.

THIS CONTAINER IS DESIGNED FOR PASTEURIZED PRODUCTS UP TO AND INCLUDING 3.5 GAS VOLUMES WHERE PASTEURIZATION TEMPERATURE OF 145° F IS NOT EXCEEDED.

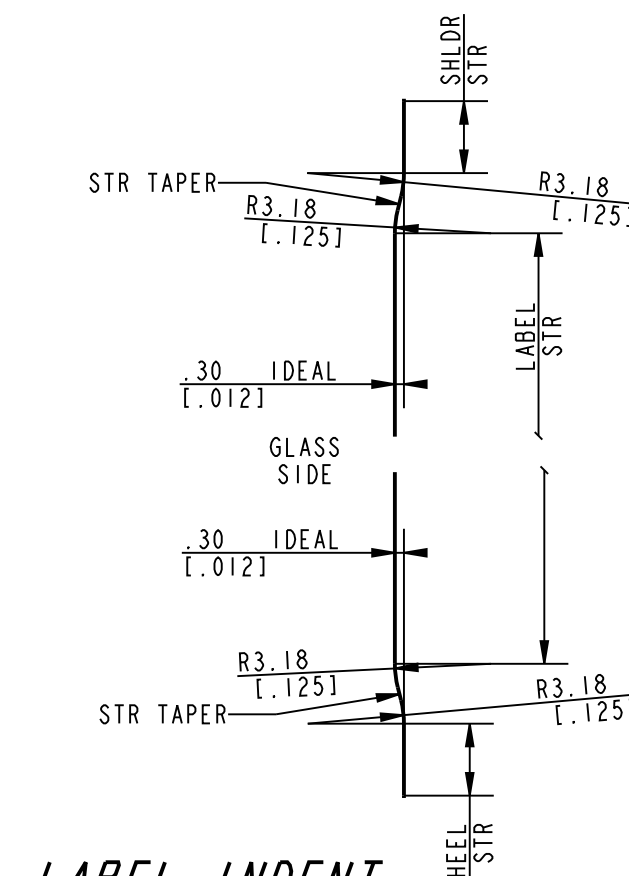
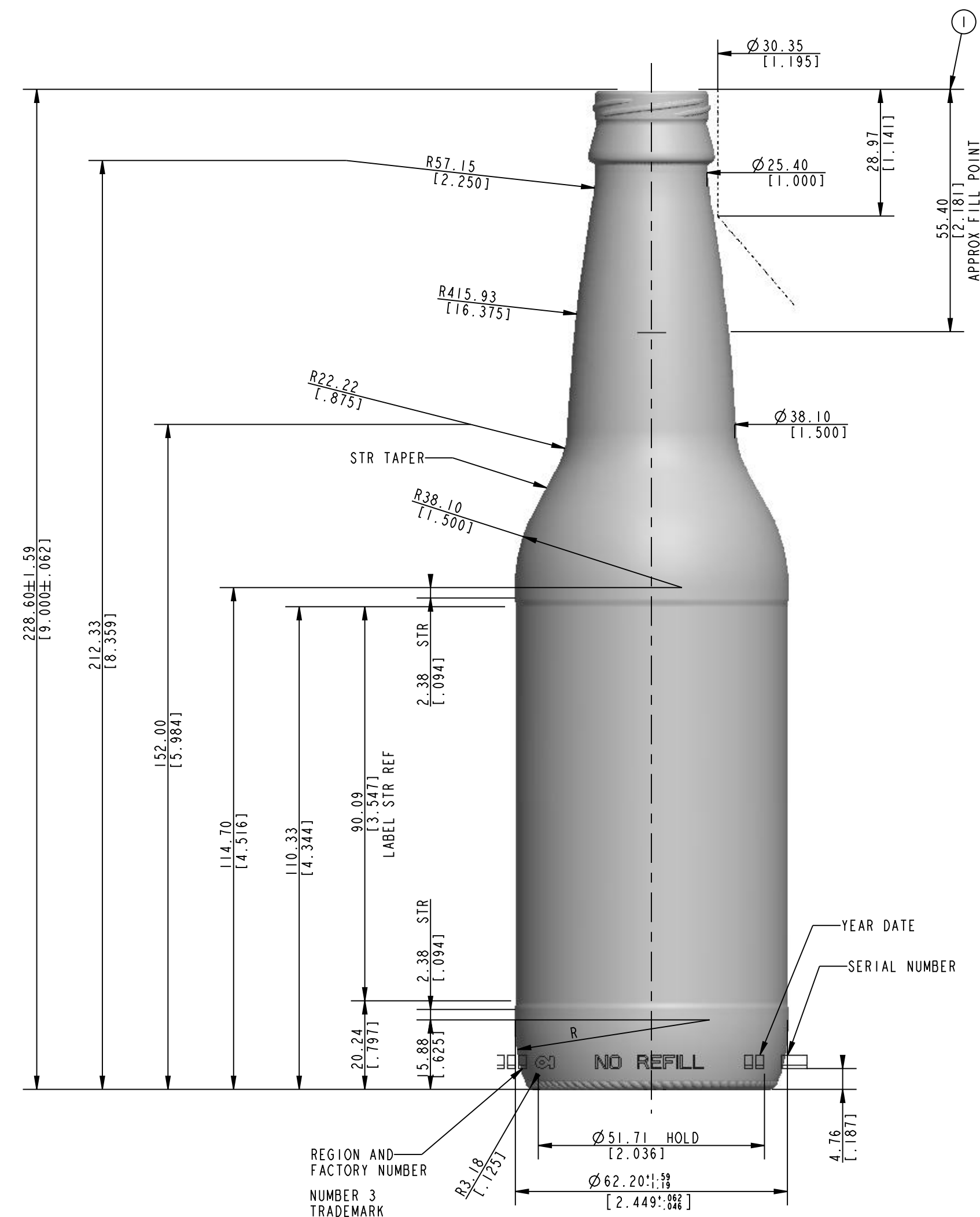
IT IS THE RESPONSIBILITY OF THE GLASS CONTAINER PURCHASER TO CONSULT WITH ITS CLOSURE AND CONTAINER SUPPLIERS TO DETERMINE THE APPROPRIATE PRESSURE LIMITS FOR THE COMBINATION OF THE CONTAINER, ITS FINISH, AND THE CLOSURE CHOSEN, WHEN THE CONTAINER WILL BE SUBJECTED TO PRESSURE OR USED FOR CONTENTS UNDER PRESSURE.

| | | |
|---|-------------------------|--------------------------------------|
| CONTAINER OVERFLOW CAPACITY (BRIMFUL) | | |
| 378.84 ml [12.810 FL OZ] | | |
| CONTAINER RATED CAPACITY (FILLPOINT) | | |
| 354.88 ml ± 5.55 ml [12.000 FL OZ ± 0.188 FL OZ] | | |
| CONTAINER WEIGHT | | |
| 226.80 g ± 8.86 g [8.000 OZ ± 0.313 OZ] "B" | | |
| FINISH DESIGNATION 026-0500-R007 | | MAX GAS VOLUME 4.0 Gas Vol |
| PROCESS B&B | RETURNABLE NO | DESIGN REF. GB-15944 |

STOCK
12 FL. OZ. LONG NECK NON-REFILLABLE

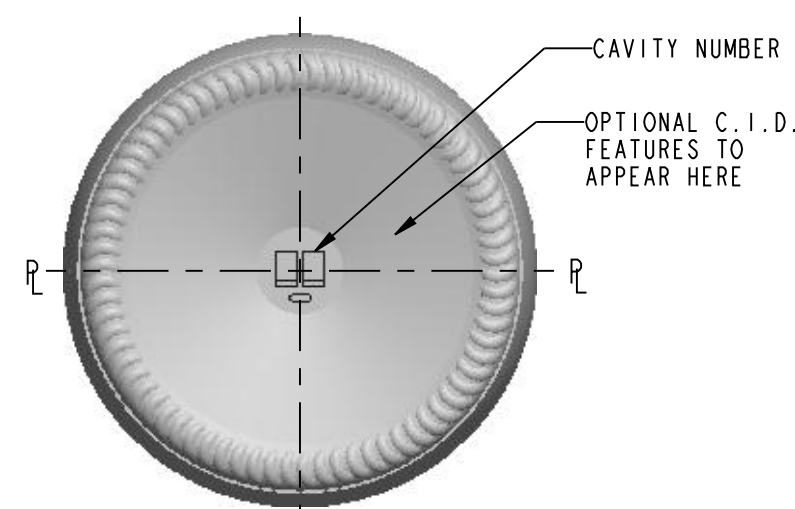
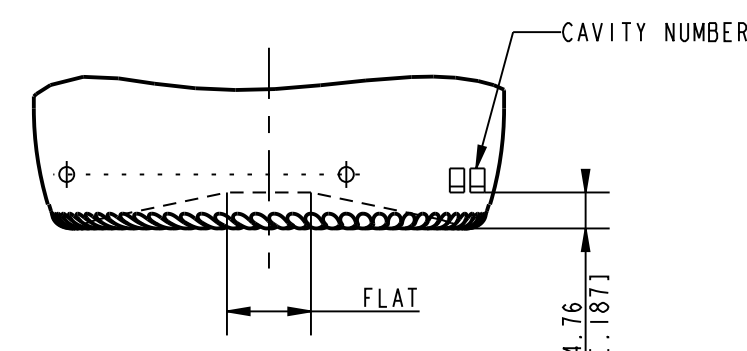
| | | | |
|----------|-----|------|-----------|
| DESIGNER | JJB | DATE | 24 APR 01 |
| CHECKED | KAR | DATE | 01 OCT 09 |

| | |
|----------------|------------------|
| DRAWING NUMBER | MOULD/SAP NUMBER |
| BE-36368-B-4 | GB-16292 |



*LABEL INDENT
DETAIL*

SCALE 4.000



INFORMATION CONTAINED HEREIN CONSTITUTES
PROPRIETARY CONFIDENTIAL INFORMATION OF
OWENS-BROCKWAY GLASS CONTAINER INC. AND IS TO
BE ACCEPTED ONLY SUBJECT TO THAT UNDERSTANDING.
IT IS TO BE KEPT CONFIDENTIAL AND NOT TO BE
COPIED, USED OR CONVEYED TO OTHERS WITHOUT
OWENS-BROCKWAY GLASS CONTAINER INC WRITTEN
AUTHORIZATION.

ALL LETTERING TO BE ROUND BOTTOM STYLE,
RAISED IN GLASS, UNLESS OTHERWISE NOTED.

ALL NON TOLERANCE SIZES ARE FOR
MOLD MANUFACTURE REFERENCE ONLY.

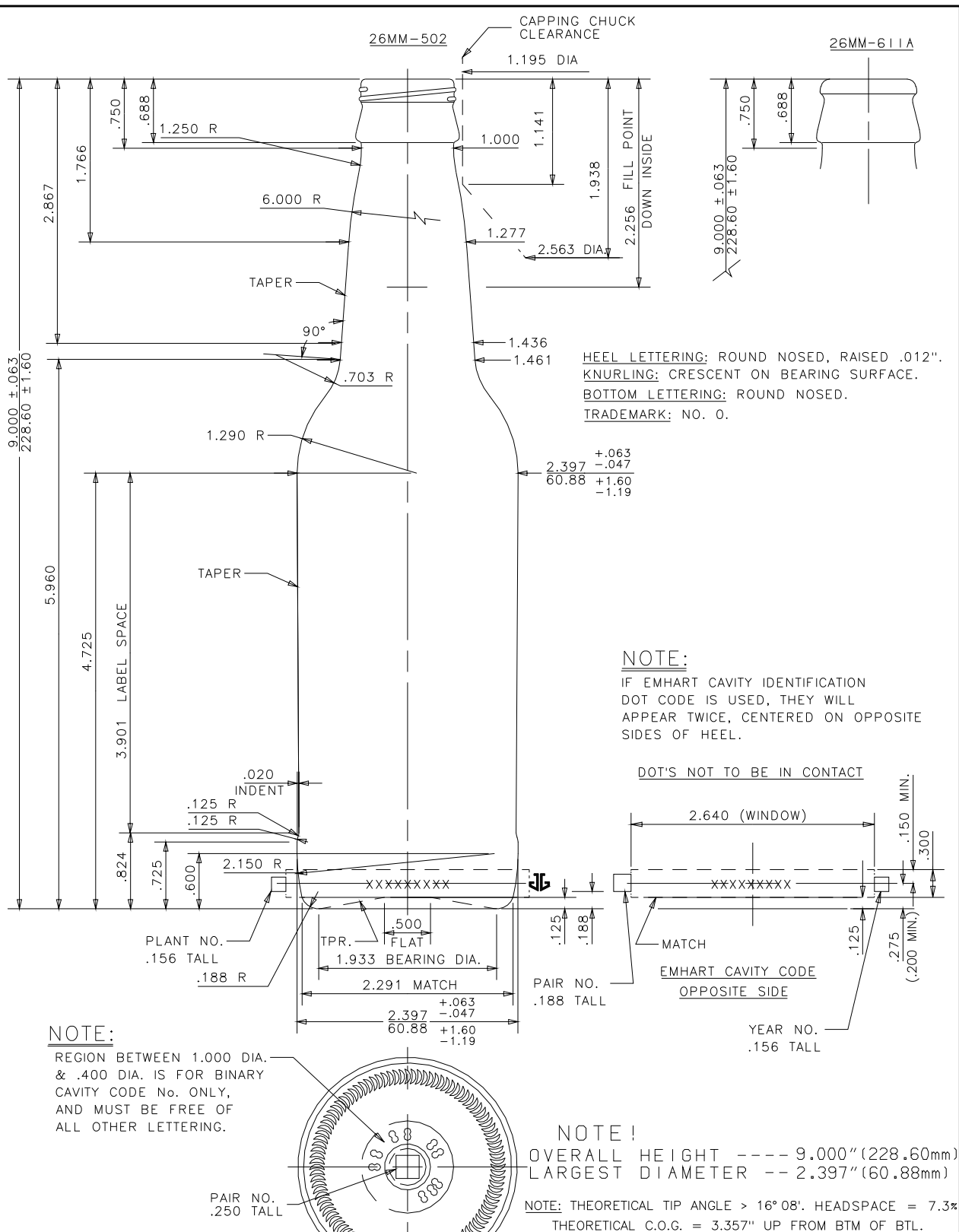
| <i>APPROX. STABILITY PROPERTIES</i> | <i>EMPTY</i> | <i>FULL</i> |
|-------------------------------------|--------------|-------------|
| CENTER OF GRAVITY (IN INCHES) | 3.46 | 3.18 |
| BOTTLE STABILITY RATIO | 0.59 | 0.64 |
| TIP ANGLE (IN DEGREES) | 16.4 | 17.7 |

| | | | |
|-----|-----------|--|--------------|
| | | | |
| | | | |
| | | | |
| - 4 | 01 OCT 09 | REMOVED 026-0500-R004 FIN; ADDED 026-0500-R007 FIN; REDRAWN / UPDATED IN PRO-E | ERA |
| No | DATE | REVISIONS | DESIGN/CHECK |

SCALE 0.750

SHEET 2 OF 4

0.58 ACT HEEL LETT CLEAR; 0.48
ACT CID DOT CLEAR; DOTS AT MIN HT



THIS BOTTLE IS DESIGNED TO PROVIDE CROWN REST CLEARANCE INDICATED ONLY. CUSTOMER MUST ADVISE IF ANY SPECIAL CLEARANCES ARE REQUIRED.

IT IS THE RESPONSIBILITY OF THE GLASS CONTAINER PURCHASER TO CONSULT WITH ITS CLOSURE AND CONTAINER SUPPLIERS TO DETERMINE THE APPROPRIATE PRESSURE LIMITS FOR THE COMBINATION OF THE CONTAINER, ITS FINISH, AND THE CLOSURE CHOSEN. WHEN THE CONTAINER WILL BE SUBJECTED TO PRESSURE OR UTILIZED FOR CONTENTS UNDER PRESSURE.

THIS CONTAINER IS DESIGNED FOR PRODUCTS UP TO AND INCLUDING 3 GAS VOLUMES WHERE PASTEURIZATION TEMPERATURE DOES NOT EXCEED 145°F.

| | |
|---|---------------|
| 5. ADDED 26-611A FINISH, & REM. "BLOW MOULD TO 812P1" NOTE. | 1/02/01 CNM |
| 4. REMOVE TENTATIVE NOTE, WEIGHT WAS 6.600 OZ, BODY DIAS WERE 2.394 | 11/22/00 SODE |
| 3. LABEL SPACE WAS 3.782, O'FLOW WAS 12.810, ELIMINATED TAPER IN SHLD, CHANGES PER APPROVAL PRINT C-93182R2 | 10/11/00 SODE |
| 2. ADDED ITEM NUMBER | 7/20/00 SODE |
| 1. FINISH WAS 26-502 L | 5/9/00 SODE |

REVISIONS

SIZES & SPECIFICATIONS SHOWN ARE IDEAL. ACTUAL SAMPLES WILL DETERMINE SIZES.

| | |
|---|----------------------|
| SCALE: FULL | SHAPE CODE: 10 |
| OVERFLOW: | |
| 12.881 ± .188 FL OZ 380.89 ± 5.56 ML | |
| FILL POINT OR NOMINAL CAPACITY: | |
| 12.000 FL OZ 354.87 ML | |
| WEIGHT: | 6.750 OZ 191.38 G |
| PROJECT No. | 18593 NNPB |



CONSUMERS GLASS

Anchor Glass Container

DESIGN/ENGINEERING TAMPA, FLORIDA TORONTO, CANADA

GENERAL SALE

12 FL. OZ. N/R BEER BOTTLE

ITEM No. 812R8

DATE 4-17-00 DRN. BY J. P. Gode

DWG. No.: C-93053